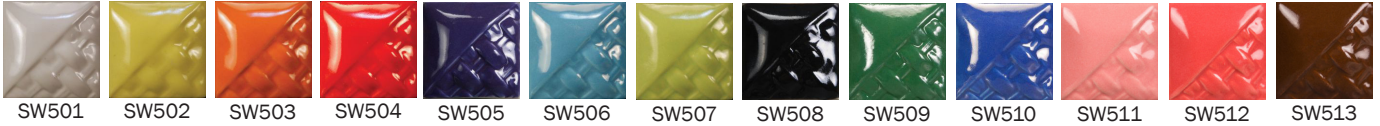


MAYCO STONEWARE GLOSS GLAZES

Mayco's Stoneware Gloss glazes produce bright, opaque colors with a high gloss finish. Stoneware Gloss glazes can be used in design, all over coverage and are the ideal product for intermixability at mid-range temperatures. The integrity of your design will remain unchanged as these glazes are incredibly stable and will not move or combine with surrounding colors. As with all of the Stoneware Glazes, these Gloss glazes work well on a variety of clay bodies and have a firing range from cone 5 to cone 10, some colors change slightly at higher temperatures, so test!



SW501..... White Gloss\$15.25	SW506..... Bright Blue Gloss\$15.25	SW510..... Blue Gloss\$15.25
SW502..... Yellow Gloss\$15.25	SW507..... Bright Green Gloss.....\$15.25	SW511..... Pink Gloss\$15.25
SW503..... Orange Gloss.....\$17.00	SW508..... Black Gloss\$15.25	SW512..... Coral Gloss.....\$15.25
SW504..... Red Gloss\$17.00	SW509..... Dark Green Gloss\$15.25	SW513..... Brown Gloss\$13.25
SW505..... Purple Gloss.....\$17.00		

MAYCO FLUX

Flux Glazes are mid-range glazes that were developed to be used in combination with other mid-range glazes to produce flowing effects. Designed to fire to ^5-^6, but can be fired to ^9-^10. **PLEASE NOTE:** movement will be more pronounced above ^6.

	4 oz	Pint
SW401 LightFlux.....	\$5.50.....	\$17.00
SW402 Dark Flux.....	\$5.50.....	\$17.00



SW401



SW402

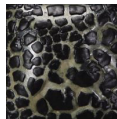
MAYCO MUDCRACK

Mudcrack glazes were developed to create highly textured, raised and cracked surfaces. Thicker applications will create more texture.

	Pint
SW403..... White Mudcrack.....	\$17.00
SW404..... Black Mudcrack.....	\$17.00



SW403



SW404

MAYCO MAGMA

Magma glazes were developed to create rough, cratered surfaces. Thicker applications will create more texture.

	Pint
SW405..... Light Magma.....	\$17.00
SW406..... Dark Magma.....	\$17.00



SW405



SW406

AMACO PC FLUX

These glazes benefit from a heavy-handed application ... except **PCF74 River Birch and PCF Moss Mist, which will run.** Apply fewer or thinner coats near the base of the ware when using these glazes. These are all food safe glazes. Texture will highlight the beauty of these glazes.

	Pint
PCF3.....Midnight Rain	\$21.00
PCF18.....Honey Dew.....	\$21.00
PCF19.....Cirrus Flow	\$21.00
PCF54.....Flux Blossom	\$21.00
PCF74.....River Birch	\$21.00
PCF75.....Moss Mist.....	\$21.00



PCF3 PCF18 PCF19



PCF54 PCF74 PCF75

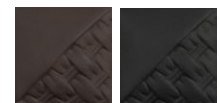
MAYCO ENGOBES

Engobes are similar to a slip, used to coat your clay body to your preferred finish/color and are often used for a variety of decorative techniques, such as sgraffito and majolica. They can be applied to wet clay, greenware or bisque and fire from cones 5-10. Engobes have a similar texture to underglazes and require a clear glaze (matte or gloss) to be considered dinnerware safe.

	Pint
EG001.....White	\$15.25
EG002.....Speckled Buff	\$15.25
EG003.....Brick Red	\$15.25
EG004.....Dark Brown.....	\$15.25
EG005.....Black	\$15.25



EG001 EG002 EG003



EG004 EG005